

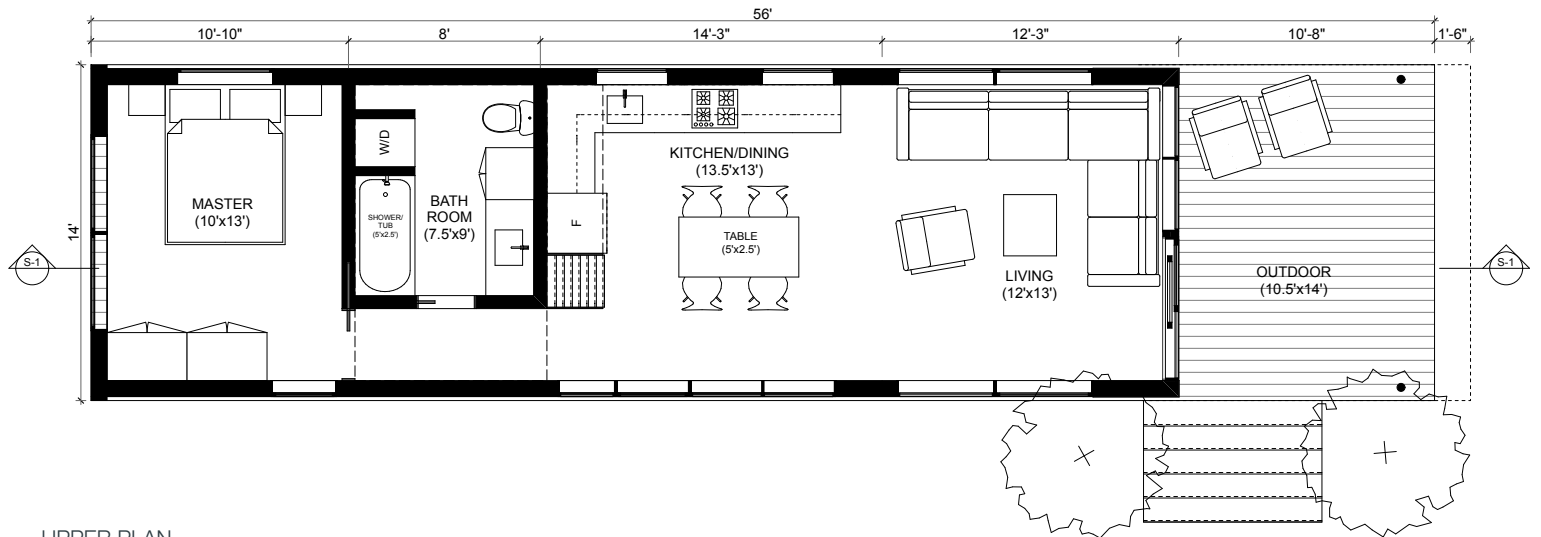


**muuHOME**  
by Altius Architecture Inc

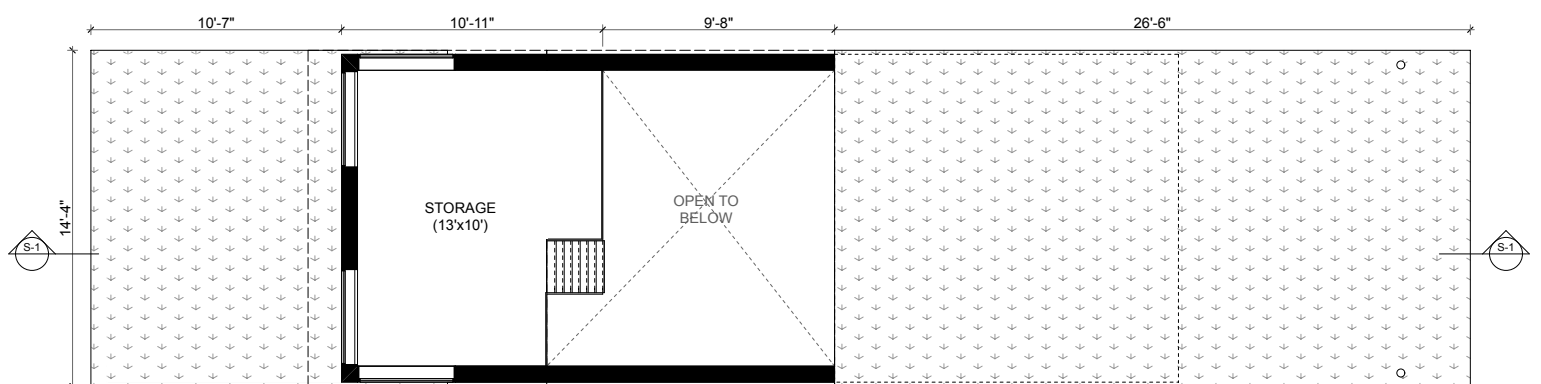
640sf INT + 135sf STORAGE + 140sf EXT = 915sf TOTAL

California **SOLO 2**

MAIN PLAN



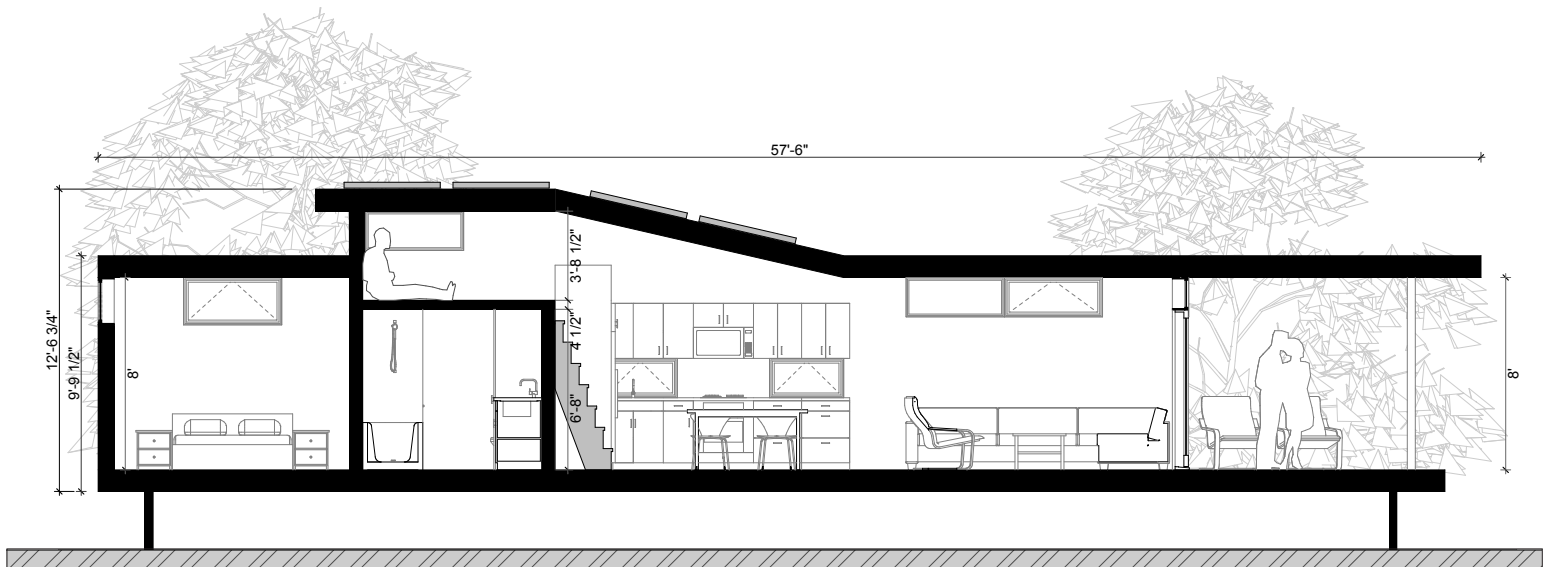
UPPER PLAN



Built in California by

**HMK PREFAB HOMES**

[www.sustain.ca](http://www.sustain.ca)



#### Structure:

- Engineered lumber frame construction roof assembly
- Structural steel chassis and floor assembly

#### Standard External Cladding:

- Insulation: Hybrid Batt - Spray sealant (water based elastomeric sealant)
- Floor: Total Assembly R22 (including reflective wrap)
- Wall: Total Assembly R20 (including reflective wrap)
- Roof: Total Assembly R38 (including reflective wrap)
- Windows: Marvin Integrity: Fiberglass clad exterior, clear Pine interior
- Roof Membrane: TPO roof membrane
- A combination of Cedar siding and cementitious panels (James Hardie)
- Cedar Porch Decking

#### Standard Interior Finishing:

- Walls / Ceiling: Prefinished Baltic Birch Ply (drywall optional)
- Kitchen: Solid Surface Countertops with slab cabinetry
- Floor: Cork
- Appliances: EnergyStar dishwasher and refrigerator
- Lighting: LED & CFL available
- Bathroom: Acrylic Tub/Shower; Low Flow Fixtures

#### Standard Mechanical Systems:

- High efficiency tankless hot water heater (gas or electric)
- Whole house ventilation system
- Forced Air with Air to Air Heat pump (to be installed on-site)

Built in California by

**HMK PREFAB HOMES**

**NO VINYL  
NO CFCs**

**NO DRYWALL  
SOLAR HOME SYSTEMS**

**NET ZERO ENERGY SYSTEMS  
SUSTAINABLE MATERIALS**

**QUALITY CONSTRUCTION  
OPTIONAL OFF GRID SYSTEMS**

**[www.sustain.ca](http://www.sustain.ca)**