



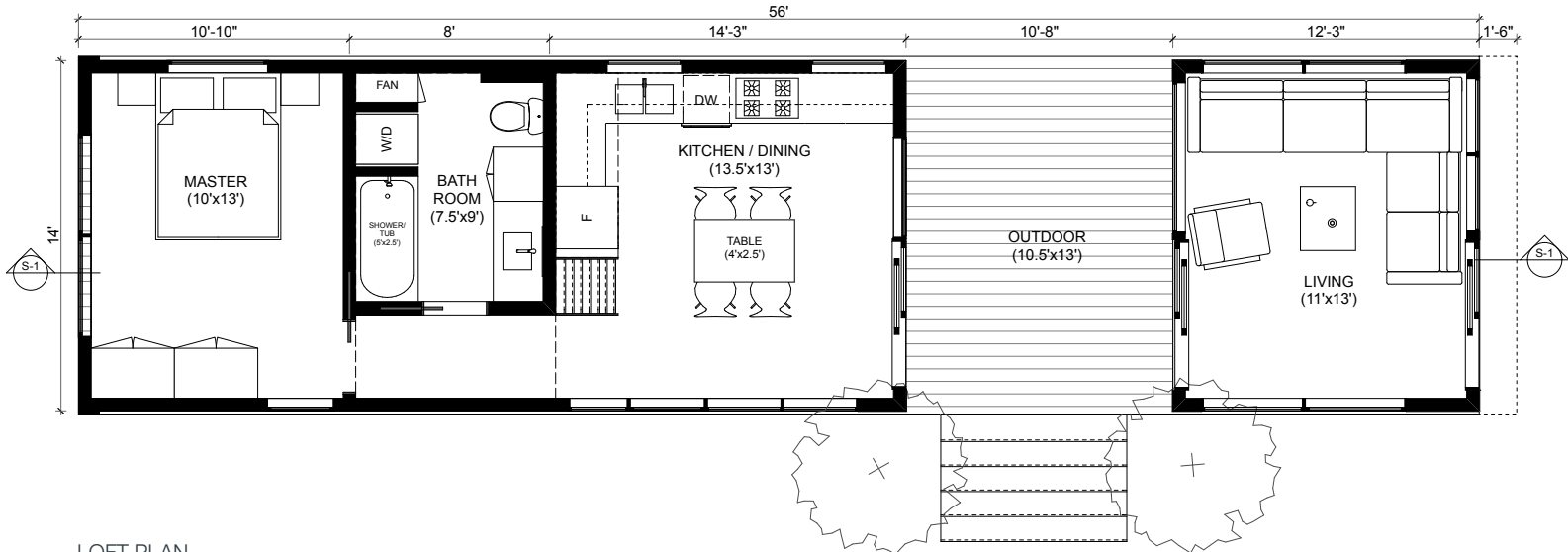
miniHOME

640sf INT + 135sf STORAGE + 140sf EXT = 915sf TOTAL

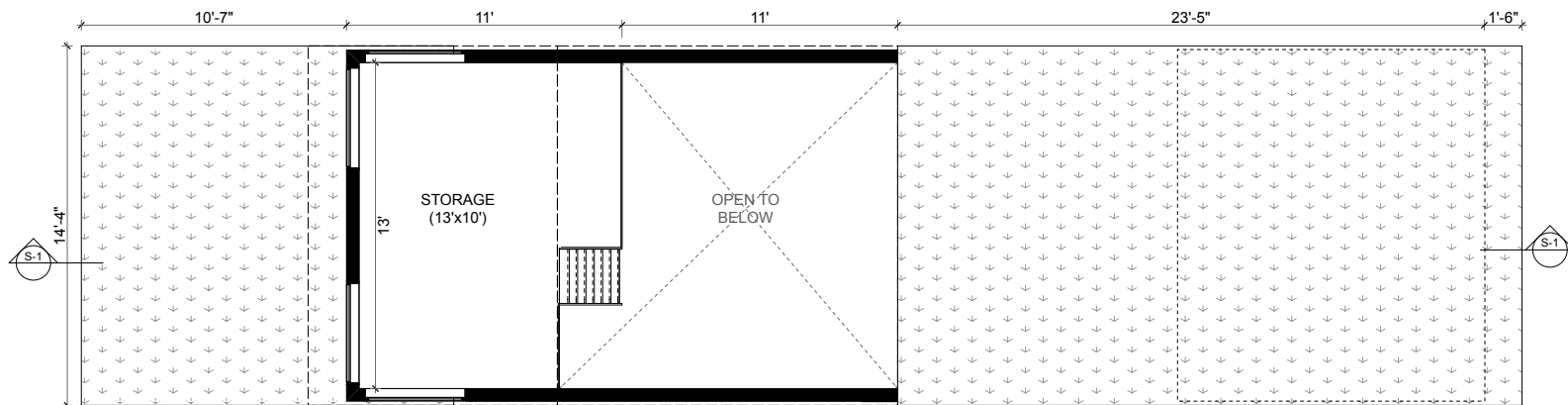
California **SOLO 1**

www.sustain.ca

MAIN FLOOR PLAN



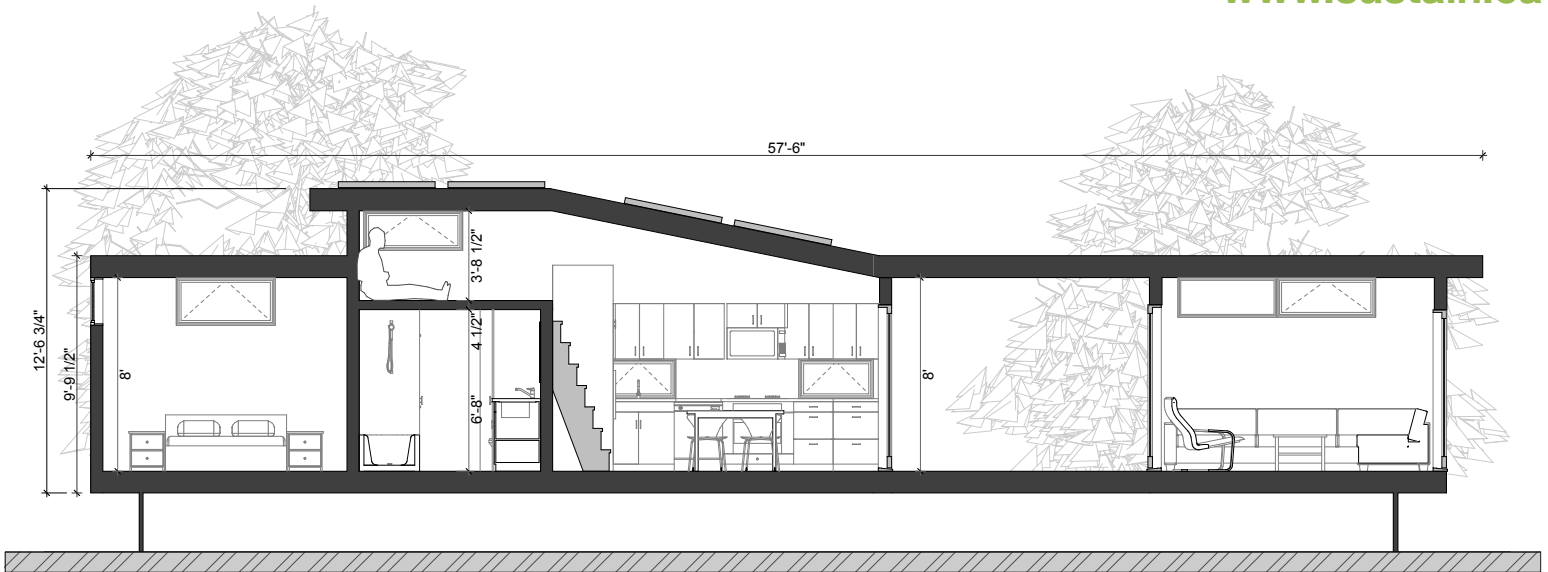
LOFT PLAN











Structure:

- Engineered lumber frame construction roof assembly
- Structural steel chassis and floor assembly

External Cladding:

- Insulation: Hybrid Batt - Spray sealant (water based elastomeric sealant)
- Floor: Total Assembly R22 (including reflective wrap)
- Wall: Total Assembly R20 (including reflective wrap)
- Roof: Total Assembly R38 (including reflective wrap)
- Windows: Marvin Integrity: Fiberglass clad exterior, clear Pine interior
- Roof Membrane: TPO roof membrane
- A combination of Cedar siding and cementitious panels (James Hardie)
- Cedar Porch Decking

Interior Finishing:

- Walls / Ceiling: Prefinished Baltic Birch Ply
- Kitchen: Solid Surface Countertops with slab cabinetry
- Floor: Cork
- Appliances: EnergyStar dishwasher and refrigerator
- Lighting: LED & CFL available
- Bathroom: Acrylic Tub/Shower; Low Flow Fixtures

Mechanical Systems:

- High efficiency tankless hot water heater (gas or electric)
- Whole house ventilation system
- Heat pump (to be installed on-site)

NO VINYL
NO CFCs

NO DRYWALL
SOLAR HOME SYSTEMS

NET ZERO ENERGY SYSTEMS
SUSTAINABLE MATERIALS

QUALITY CONSTRUCTION
OPTIONAL OFF GRID SYSTEMS