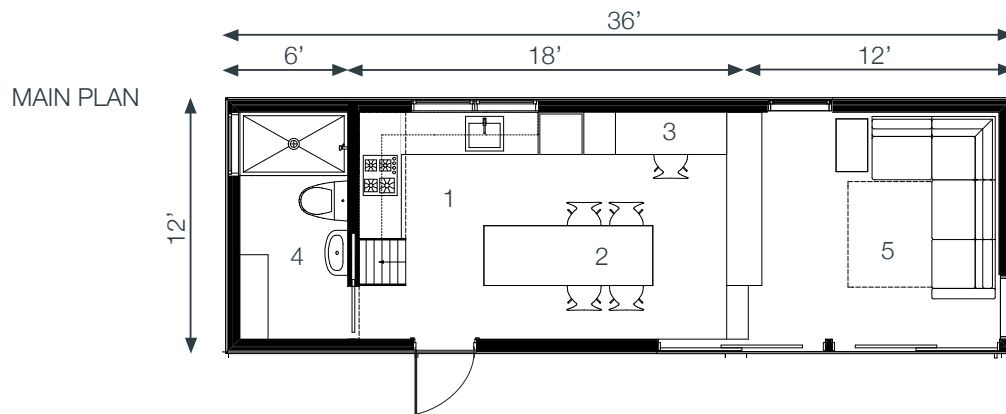




**miniHOME**  
by Altius Architecture Inc

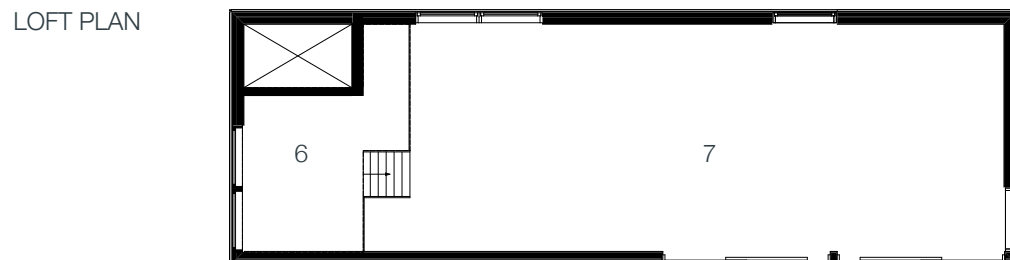
432sf INTERIOR + 96sf LOFT = 528sf TOTAL

36 SOLO



LEGEND

- 1. Cook
- 2. Dine
- 3. Create
- 4. Bathe
- 5. Entertain / Dream



- 6. Sleeping Loft
- 7. Open to Below

## Exterior

<b>Structure:</b>	Engineered wood frame constructions on structural steel chassis
<b>External Cladding:</b>	A combination of pre-finished pine & Douglas Fir
<b>Insulation System:</b>	BASF Walltite Spray applied to medium density Polyurethane foam
Floor:	Total Assembly R33.5 (code requires R31)
Wall:	Total Assembly R25 (code requires R29)
Roof:	Total Assembly R32 (code requires R31)
<b>Roof Membrane:</b>	80 mil Proseal flat roof membrane
<b>Windows:</b>	Marvin Integrity; Fibreglass Clad Exterior, Clear Pine Interior
<b>Optional:</b>	Green Roof system, solid D.Fir lift & slide doors

## Interior

<b>Walls / Ceiling (11ft):</b>	Prefinished Baltic Birch Ply
<b>Cabinets:</b>	Birch
<b>Floor:</b>	Cork
<b>Appliances:</b>	EnergyStar
<b>Lighting:</b>	LED & CFL
<b>Bathroom:</b>	Acrylic Tub/Shower; Low Flow Fixtures
<b>Mechanical:</b>	Electric boiler for heat and DHW Energy Recovery Ventilator
<b>Optional:</b>	Pellet stove, propane boiler

## Set Up

If models do not require a permanent foundation, a simple leveling and blocking will suffice. If a permanent foundation is required; a sonotube concrete foundation, concrete pad (insulated slab on grade), or typical frost wall foundation will work.

Set-up requirements on your end include:

<b>Water :</b>	municipal or park service; self service (well or lake pump); storage tank
<b>Power :</b>	electrical plug into service; PV panels with a battery bank are available if you do not have service
<b>Wastewater :</b>	septic; municipal; holding tank; gravel pit.

## Zoning

The miniHome can be classified as a building or manufactured home under the Ontario Building Code. Zoning is generally dependent on location (lot density), size (minimum size standard), use (main building versus accessory building) and permanency (requires foundation). You can find information about zoning in your area by contacting your local municipality.

**NO VINYL  
CSA CERTIFIED**

**NO DRYWALL  
RENEWABLE MATERIALS**

**QUALITY CONSTRUCTION  
OPTIONAL OFF-GRID SYSTEMS**