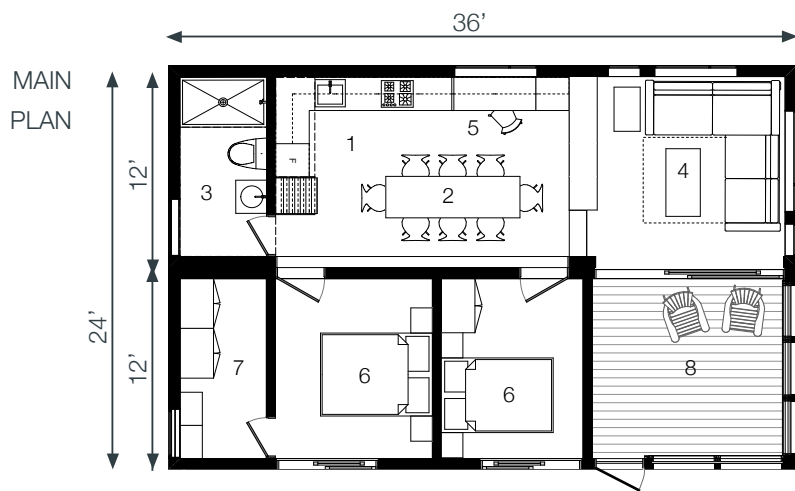




*mini*HOME

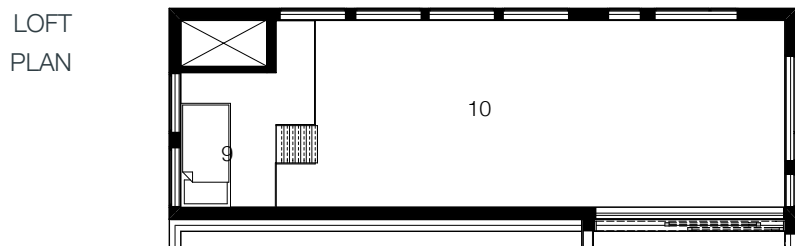
36+24 DUO

Dimensions 726 sf+ 96 sf loft+ 144 sf porch
Square Feet 966 sf



LEGEND

- 1. Cook
- 2. Dine
- 3. Bathe
- 4. Entertain
- 5. Create
- 6. Dream
- 7. Closet/Storage
- 8. Screen Porch



- 9. Sleeping Loft
- 10. Open to Below

Standard Exterior

Structure:	Engineered lumber frame constructions on structural steel chassis
External Cladding:	A combination of pre-finished pine & Douglas fir
Insulation System:	BASF Walltite Eco Foam Spray applied to medium density Polyurethane foam, BP R4 insulsheathing
Floor:	Total Assembly R30 (code requires R27)
Wall:	Total Assembly R34 (code requires R27)
Roof:	Total Assembly R36 (code requires R30)
Roof Membrane:	80 mil Proseal flat roof membrane
Windows:	Marvin Integrity; Fibreglass Clad Exterior, Clear Pine Interior
Optional:	Green Roof, Hot tub, Phenolic Panel Cladding, Galvalume Metal Cladding

* Decks are not included in the cost. Deck plans are available from Sustain or feel free to build your own to suit your particular site and needs.

Standard Interior

Walls / Ceiling (11ft):	Prefinished Baltic Birch Ply
Cabinets:	Birch veneer with water based finish
Floor:	Cork
Appliances:	EnerStar
Lighting:	LED & CFL
Bathroom:	Acrylic Tub/Shower; Low Flow Fixtures, Dual flush toilet
Mechanical:	40 gallon electric or propane boiler for heat and DHW Energy Recovery Ventilator with water to air coil and autodefrost for heat and cooling
Optional:	Cabinet colours (red,platinum,white), stainless steel counters with integral sinks, floor materials (engineered hardwood, bamboo), LED lighting, composting toilet, pellet stove

Manufacturing & Shipping

The units will be manufactured in Bracebridge, Ontario. The estimated manufacturing time is approximately 6 weeks and delivery is approximately \$6 per kilometer.

Set Up

Models do not require permanent foundation; a sonotube concrete foundation, concrete pad (insulated slab on grade), or even simple leveling and blocking will suffice. Set-up requirements on your end include:

Water :	municipal or park service; self service (well or lake pump); storage tank
Power :	electrical plug into service; PV panels with a battery bank are available if you do not have service
Wastewater :	septic; municipal service; holding tank; gravel pit.

**NO VINYL
NO CFCs**

**NO DRYWALL
CSA CERTIFIED**

**NO TOXIC MATERIALS
SUSTAINABLE MATERIALS**

**QUALITY CONSTRUCTION
OPTIONAL OFF GRID SYSTEMS**