

## minihome solo se 2008

sustainability, affordability, simplicity, beauty



The future of sustainable living is here... **\$119,000.00** (plus applicable taxes, shipping & duty)

*mini***HOME**

The miniHome offers the possibility for year-round affordable living on almost any site. It is equally at home in a remote wilderness setting - completely off-grid - or in an urban trailer park. Its remarkable combination of energy efficient systems and beautiful finishes usually associated with luxury condominiums, results in a home that sings the virtues of simplicity and conservation.

We will only be accepting deposits towards the purchase of the SOLO SE up until November 30th 2007 in order to meet our production and delivery targets.

The miniHome SOLO SE is the world's first ecological, self-contained, modular housing solution. Classed as a travel-trailer (CSA Z-240RV), on wheels and featuring a detachable hitch, the miniHome can be towed to any site and requires no foundation or infrastructure hook-ups<sup>1</sup>. Designed and built in Canada for year round living, the miniHome's robust construction is super-insulated, making it quick and easy to heat and cool.

The Special Edition begins production this Winter, 2008 and features an even more liveable interior arrangement that makes 350 square feet feel like 600!<sup>2</sup> Improved systems, more robust hardware and appointments, and a thoroughly redefined exterior and interior delivers on looks and lets the miniHome sit amazingly well on any site.

In crafting the Special Edition, Sustain has democratically<sup>3</sup> selected materials, systems and finishes that provide the best value, while still incorporating many of the high-end and green features that have come to define the miniHome as the ecological and off-grid home of the 21st century. The SOLO SE has numerous environmental advantages over conventional housing. A smaller building uses less resources and energy to build, and ultimately much less energy to operate and maintain. The modular design also keeps construction waste, shipping costs and energy to a minimum. The miniHome uses 1/10th the water, fuel and materials, and 1/100th the electrical energy when compared with a conventional home - making it a true 'Factor 10' - or net-zero house.

We have opted for durable materials that do not require maintenance or refinishing, thus lowering costs and eliminating air pollution. What we have not sacrificed is style, amenity, convenience or comfort, as any visitor to the miniHome can readily appreciate! This feat of spatial organization is accomplished by the ingenious location of storage and systems in every nook and cranny, generous work-surfaces, wide circulation space, long interior views and high ceilings. Optimal placement of large, operable windows maximize natural light and fresh air and contribute to the passive solar gains in the Winter heating season. Low-e coatings, ventilated exterior cladding, an 'eco-roof' and the double-height volumes encourage passive airflow and maximize cooling and natural ventilation in the Summer.

Additional features, such as the hybrid solar/wind/propane energy system, healthy and sustainable materials, multi-tasking furniture and mill-work, intelligent controls, silent appliances, warm-white LED lighting, central rainwater collection, and optional supply-, grey- and waste-water solutions take the miniHome 'all the way'. Careful selection of these systems and assemblies (based on a 20 years of experimentation, and a solid year of field-testing) ensures that your miniHome will provide thermal comfort, convenience and quiet, trouble-free operation for decades.

1. Regionally approved water supply and wastewater systems are required. Greywater and Rainwater systems may be added where precedents have been established - see our detailed specifications for more info
2. Of thousands of visitors surveyed, 600 square feet was the most common response when asked how many square feet they thought the miniHome was!
3. The Special Edition Specification is the result of a survey of over 500 people that selected options they would like to see in their miniHome - results of this survey can be seen in our detailed specifications.

## It's on Wheels *Freedom to Roam*

The miniHome lets you move when you need to - with all of your furniture and belongings already inside! It can be easily shipped anywhere in North America! As a robust and extremely durable product, miniHomes will hold their value like nothing else on the market. Setup occurs in a matter of minutes, and our professional and courteous staff can help you with every aspect of shipping, siting (for optimal performance), setup and operation of your miniHome for the first time.

## Freedom to Breathe *Healthy Materials*

The miniHome SE brings a new level of casual elegance to the prefabulous dwelling, with materials, fabrics and furnishings that are usually only found in high-end, custom homes. Our team's tireless efforts have ensured that the best possible fusion of environmental, quality and durability considerations inspired the selection of SE products, at the best value possible. We have striven for a richness in experience, and a satisfaction in knowing that all of our finishes will stand the test of time, look and smell beautiful and set a positive, uncompromising example which we hope others will soon follow.

## Off Grid *Electricity from the Sun and Wind*

Because of its small size and thus small energy loads, and ultra-efficient fixtures and appliances - even a small solar, wind and battery package is enough to power the miniHome year-round. All systems have been designed for quiet, efficient and trouble free operation. The AC/DC circuits allow the use of conventional appliances, such as computers, televisions, tools and other 120 VAC consumer electronics.

## Floor Plans *Well Organized Spaces that will Amaze*

The miniHome is split into four distinct spaces on three levels; the main level contains the kitchen and dining area, the rear, raised floor houses all of the mechanical, electrical, plumbing systems and controls and seasonal storage - accessible by hinged floor panels. The Sleeping Loft also gives a double height volume over the entry and dining areas. As guests, or fulltime residents, you will appreciate the possibilities for privacy and separation possible in such a small space. Unlike conventional trailers with their cluttered interiors, too many walls, tiny rooms and squashed furniture layouts, the miniHome uses fullsize residential furniture to great effect! Order your miniHome today!

## Dimensions

Overall hitch length	40'-0"
Overall length (less hitch)	36'-0"
Maximum setup width	8'-6"
Interior clear width	92"
Sleeping Capacity	6
Main Area	270 sf
Loft Area	80 sf
Total Area	350 sf
Weight	13,500 lbs
Tongue Weight	2000 lbs

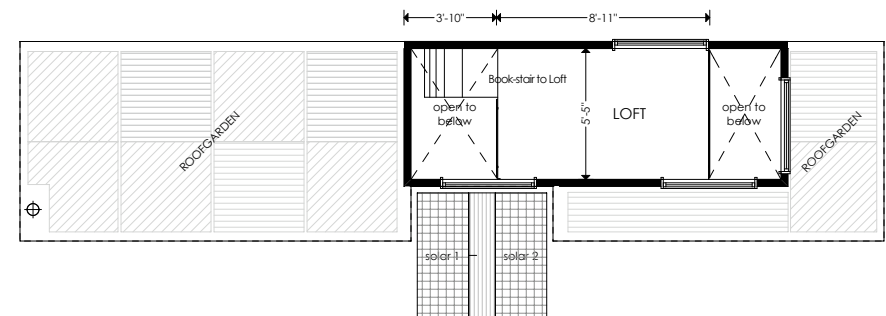
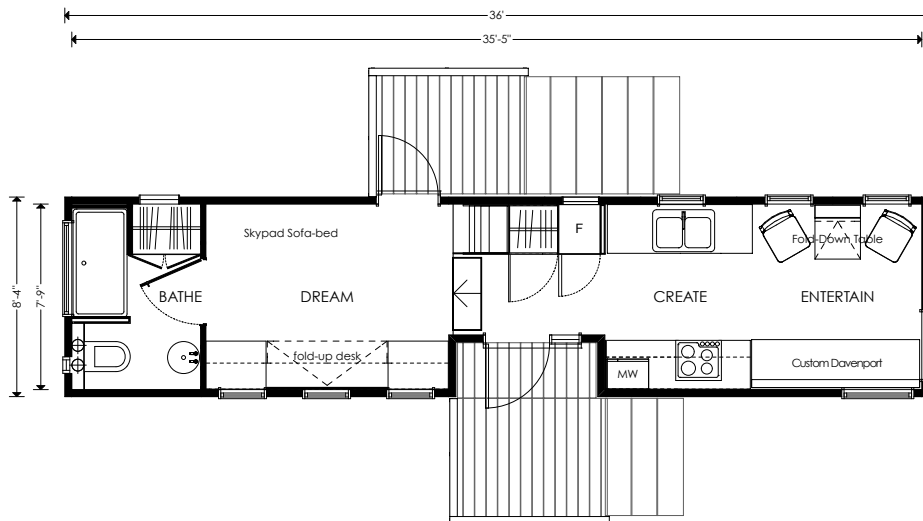
Each trailer can accommodate two double-size sofa beds and a queen-size bed in the sleeping loft.

## built by

[www.northlanderindustries.com](http://www.northlanderindustries.com)

## design & sales

Sustain Design Studio  
 1 Atlantic Avenue, Suite 120  
 Toronto, Ontario,  
 Canada  
 M6K 3E7  
 1.888.301.6464  
[www.sustain.ca](http://www.sustain.ca)



1-year 'Beta' product warranty, factory to consumer via dealer

All Park Trailers manufactured by Northlander Industries are constructed in compliance with the stringent requirements of the C.S.A.-Z 240 Recreational Vehicle standard.

The manufacturer reserves the right to improve or modify the product, without notice or obligation, which may change materials, equipment, specifications or designs. Information contained herein is from the latest data available at the time of printing. Photographs and descriptions may contain some optional extras.